

## Principals Report



Please note that The Woden School is a nut-free zone. We appreciate parents not providing peanut butter, Nuttella or similar sandwiches as we have some students and staff with severe allergies to these products. Please check that any cakes, chocolates and any food products brought



**NUT FREE ZONE**



TWS Future of Education



TWS Student Handbook

Well term 4 is always the busiest time of year at TWS, but this one has been particularly big. As the fiftieth birthday celebrations roll on, everything is happening - but bigger than ever.

The art show was a huge event this year, with all of our art works from students being sold (the staff contributions are still available). We had three incredible guest speakers, Liam, a former student and published author, Comedian Wayne Herbert and Education Director General, Katie Haire. A big thanks goes to Sarah who put all of this together and masterfully showcased the brilliant work of our students.

On the same day as the art show opening, we celebrated the famous music festival, Wodenstock. Once again this was a fantastic event with live performances from various bands from Deakin High, a live DJ and much more. The weather was spot on and everyone had a great time. Bec and Sophie, once again thank you for the amazing work you do putting these events together.

Yet another whole school event last week was the Athletic Carnival. Shannon and Nathan did an amazing job putting this together. There were events that all students participated in and the atmosphere was electric. What a way to raise school spirit - thanks guys. And let's not forget the Halloween Disco that the P&C worked with Sophie to facilitate. There was a huge turnout for the disco and it was a really fun night.

Still to come we have the year ten and twelve formals, graduation and awards ceremony, as well another interschool athletics day with Black Mountain. To say we are sprinting would be an understatement! I sincerely thank all staff that are putting in above and beyond to make this term such an amazing celebration and supporting all of the extra curricular activities.

As always, please contact me directly if you would like to discuss anything about your child's education.

Yours Sincerely,

James Malone

### Principal

James Malone

### Deputy Principal

Laura Simsen

### Business Manager

Jenna Blake

### Acting Business Manager

Chencho Om

### Executive Teachers

Nicole Terry

Moira Beverley

Matt Marasco

### Support Assistant's 4

Juniors: Emma Schirmer

Middles: Nat Burke

Seniors: Cameron Sant

### School Psychologist

Jon Schwartz

### Occupational Therapist

Annalise Korsch

### Speech Pathologist

Kate Sanderson

### Front Office

Narelle Leonard

Bethany Turner

Keshap Moktan



# UPCOMING EVENTS

Last Day For Year 10, 11 and 12	29 November
Remembrance Day	11 November
Year 10 Immunisations	13 November
Term 4 Ends	17 December
Canteen	Wednesdays
Disco	Wednesdays

## Are you feeling stressed, worried, sad, lonely or anxious?

You are not alone. This pandemic has been a very troubling and worrying time for everyone. We'd like to show you some online resources you can access if you are feeling any of these emotions.

Please access these, with the support of a parent or carer if needed, if you need some information, tips, and tricks to help you ease some of the discomfort caused by experiencing these (very normal) difficult emotions.

## Reach Out resources for young people 14 - 25 (via Beyond Blue website portal)

<https://coronavirus.beyondblue.org.au/managing-my-daily-life/young-people-aged-14-25.html>

## Head to Health

<https://www.headtohealth.gov.au/>



### Our Priorities 2022—2026

1. Engaging Curriculum and pedagogies
2. Student voice and agency
3. Student centred learning communities

# Important Contacts

Front Office

6142 0200

[TWS@thewodens.act.edu.au](mailto:TWS@thewodens.act.edu.au)

Special Needs Transport

6205 3555

[transit.act.gov.au](http://transit.act.gov.au)

Q City

6128 9313

[qcitytransit.com.au](http://qcitytransit.com.au)

Communities @ Work After School Contact

0417 043 761

[www.commsatwork.org](http://www.commsatwork.org)

## The Woden School social media

Facebook

The Woden School

<https://www.facebook.com/TheWodenSchool/>

**The Woden School turns  
50 this year**



# IMPORTANT NOTICES

## **Last Day For Year 10, 11 and 12 Student**

Friday 29th of November

## **Immunisations 2024**

**Year 10: Wednesday 13 November**

### **Parent Car Pick ups:**

**Are to occur AFTER 3pm please**, unless otherwise organised with the front office. This is so buses have time to be loaded and cleared to allow for a safe transition home. Please **do not leave your car**. Pull up along the front apron and your young person will be called.

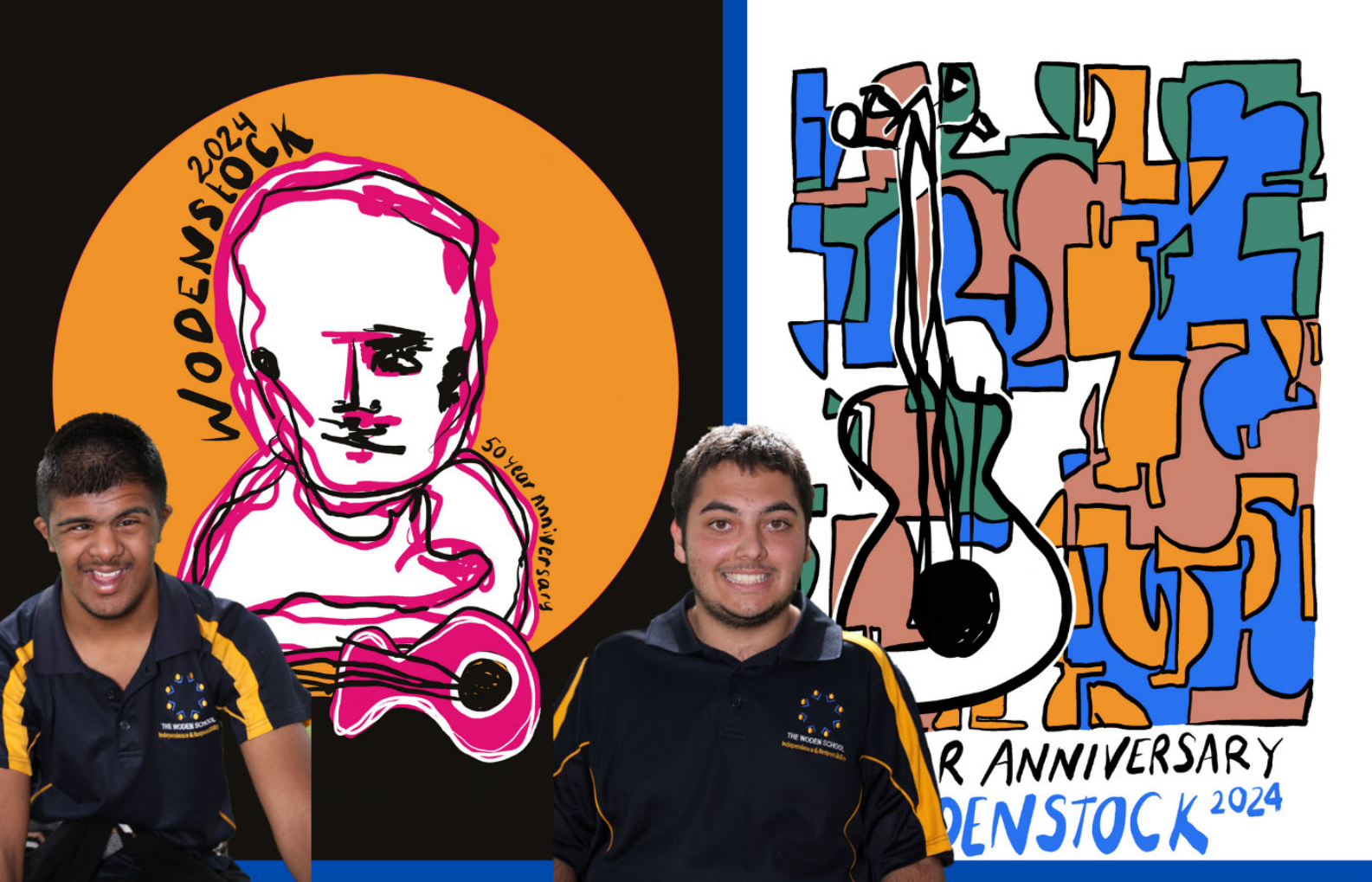
Please notify school office of any absences before 9.30am.

**No student will be transitioned across the car park.**



**The Woden School turns  
50 this year**





In term 2, students were asked to create shirt designs for Wodenstock. The finalise 7 designs were created by Prithvee, Linkin, Yarra, Christian, Mercedes, Lachlan and Sam. Students, staff and families were asked to vote and a very close call was determined. The winning designs were Sam A and Lachlan E (above).





# WODENSTOCK



# WODENSTOCK

**We celebrated 2024 and 50 years of the Woden School this year!**

**We danced with DJ Nige and the special Boombox he brought for us. Thank you DJ Nige!**

**We played the African drums with Cherie, singing and dancing to familiar songs.**

**We celebrated the opening of our Digging Pit, with RISE the sun making a guest appearance and Moira cutting the ribbon for lots of sand play in the future.**

**We enjoyed creating BIG bubbles and juggling with our visiting Circus Warehouse crew.**

**We enjoyed having our face painted with all our favourite characters. Thank you Mollycoddle.**

**We enjoyed a sausage sizzle for our lunch. Thank you staff on the day and P&C for providing the food.**

**We proudly wore our Wodenstock T-shirts, designed by our students and organised by our Art Teacher extraordinaire, Sarah Beardsley.**

**Thank you to our whole school community for making it a very special day and another successful Wodenstock.**



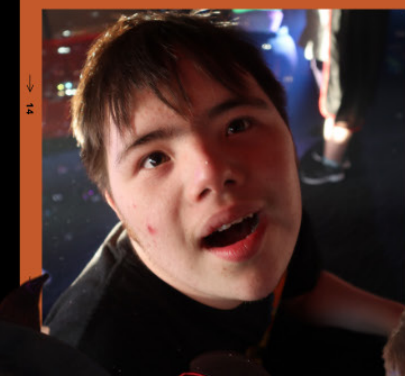
The Woden School's annual Art show had an opening night on Friday the 25th of October. Principal James Malone and Director General Katie Haire offically opened the night. Guest speakers, ex student and author Liam Adams as well as comedian, Wayne Herbert gave enlightening speeches to start the night with a spark.

This collection of almost every student's work within the school, collected over the year mainly in the Art elective. A lot of work goes into the event and as this is the schools celebration of 50 year, the art show ran over the weekend to allow more time for the work to be exhibited.

Tad, Breanna, Ricky and Rachel helped on the night with catering and passing food. By the end of the weekend, most of the artworks were sold to families and members of the community. The money raised goes into framing or presenting the works and goes back into the Arts for supplies to be used over the year in elective.



# HALLOWEEN DISCO



# Dance Festival 2024

On Wednesday the 6th of November, a group of talented senior dance students attended the Canberra Theatre Centre to rehearse a dance piece that was showcased at the 40th anniversary of Ausdance's Youth Dance Festival. Students got to experience a professional performance environment and utilise professional technical equipment. After the rehearsal, students just happened to run into Chief Minister Andrew Barr on the first day of local parliament since the election. Students had a chat with the minister and had lots of hard-hitting questions.



# The Woden School Canteen Menu

**Term 4, 2024** | Food freshly prepared by the student canteen work team



**IMPORTANT:** Recess can be either pre-ordered or purchased over the counter.

Lunch must be pre-ordered. **Please note that the canteen will be closed for end of year cleaning from week 8.**

## HOW TO ORDER

Orders must be placed in the bucket at the front office on Wednesday mornings. Clearly write on a paper bag: name, year, recess & lunch order with amount included.

### Our canteen only runs on WEDNESDAYS

#### Drinks (available at recess and lunch)

Juice popper	\$2.00
Milkshake (chocolate/strawberry/caramel)	\$3.00
Berry smoothie	\$3.00
Water 250ml	\$1.00

#### Recess only

Mini pizzas	\$2.00
Biscuits	\$3.00
Jelly Cup	\$1.00
Muffin	\$1.50
Sausage roll	\$3.00
Meat pie	\$5.00
Samosa and Chutney	\$4.00
Hot chips	\$4.00
Cheese toastie Ham/ Tomato	\$3.00

#### Lunch only

Sandwiches	\$5.50
Ham	
Ham & Cheese/ Ham, Tomato & Cheese	
Vegemite	
Salad Sandwich	
Vegemite and cheese	

## WEEKLY LUNCH SPECIALS

**\$8.00**

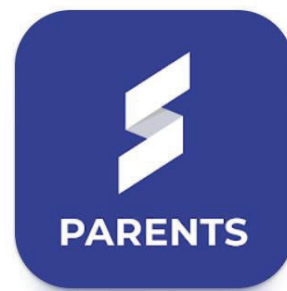
- Week 1: Vietnamese Noodles with Lemongrass Chicken
- Week 2: Falafel Wrap
- Week 3: Chicken Tacos
- Week 4: Hamburger and Chips
- Week 5: Chinese Chicken and Fried Rice
- Week 6: Chicken Pot Pie and Garden Salad
- Week 7: Grilled Chicken Burger and Chips
- Week 8: **Closed**
- Week 9: **Closed**
- Week 10: **Closed**

## Parent Portal is now available as a mobile app!

You can now access Parent Portal with the *Sentral for Parents* app. Download Sentral for Parents for free through the [App Store](#) or [Google Play Store](#).



Google Play



Parent Portal is a secure online platform used to share student information between you and your child's teachers.

If you've already registered, you can download the *Sentral for Parents* app to receive notifications when new information is available.

If you haven't registered for Parent Portal yet, use this [Parent Portal access](#) link to log into or create your ACT Digital Account. To access Parent Portal, you will need your access key, you should have received this by email when we launched.

If you can't find the email with the access key, please contact the front office team for help.

Some reminders about what you can do with Parent Portal:

- notify us if your child is sick or explain an absence
- receive academic reports
- receive our school newsletter
- make payments
- access the school calendar and your child's student timetable.

**This is a friendly reminder that Ready-Set-Connect is happening in Canberra soon, and we'd hope you can make it!**

This event is a fantastic opportunity for Support Coordinators, Parents/Carers, Students, Persons Living with Disability, Teachers, Case Managers, and Local Area Coordinators to connect with local and national service providers in just two and a half hours.

Plus, don't miss out on our exciting Lucky Door Prizes sponsored by Support Network, Care Fast, and Local Expert. You might just walk away a winner!

**The Finer Details:**

-  Date: Tuesday, 19 November 2024
-  Time: 9:45 AM to 12:30 PM
-  Venue: Australian Croatian Club
-  Cost: Free for attendees!
-  Register: [Register HERE!](#)

Feel free to share the attached flyer with your network to help us spread the word about this unique networking opportunity.

If you have any questions or need further information, don't hesitate to reach out at [adam@onecommunity.net.au](mailto:adam@onecommunity.net.au) or call me at 0438 932 200.

We're excited to see you there and look forward to connecting!

*One Community is committed to creating value-based experiences, and we're proud leaders in organising disability networking events nationwide. We're also the proud hosts of the Australian Disability Service Awards.*

Kind Regards,

Adam Wren  
Events Manager  
One Community

0438 932 200  
[adam@onecommunity.net.au](mailto:adam@onecommunity.net.au)  
[www.onecommunity.net.au](http://www.onecommunity.net.au)

*Please note: my working days are Monday to Thursday*

Reestablishing the Mint Quiet Mornings starting on Saturday 7 December 2024.

As you might be aware, the Mint will open an hour earlier than usual for the Quiet Morning, to allow ticketed (free) visitors who might have heightened sensory requirements or identify as neurodivergent to explore the museum. We will limit the number of visitors, noise and visual displays and our new lighting in the gallery is very subdued.

If the initial Quiet Morning is successful, I will look at running a Quiet Morning on a Saturday at the beginning of most months.

We will advertise the Quiet Morning at the Mint on our webpage and via social media but would be grateful if you could also share the following details via relevant avenues:

### **Quiet Morning at the Mint**

*The Mint is opening its doors earlier than usual for a morning of peaceful exploration.*

*Our Quiet Morning is specially designed for those who might have heightened sensory requirements.*

*Come and visit our newly renovated exhibition space and enjoy the reduced noise and smaller crowds.*

*When: Saturday 7 December 2024*

*Time: 9:00am - 10:00am*

*Cost: Free ([bookings are required](#))*

*All children must be accompanied by an adult.*

*Please note, food and drinks are not permitted in the Mint's gallery area.*

*For more information or resources, visit our website: <https://www.ramint.gov.au/accessibility-information>*

Thank you for your assistance and please let me know if you have any questions.

Kind regards,

**Samantha Heath**

*Education and Public Programs Officer*

*Sales, Marketing and Innovation*

**Royal Australian Mint**

**2023 International winners: Most Artistic Coin, Best Circulating Coin & Innovative Coin**

**2023 National Gold winner for best cultural destination and ACT people's choice for favourite attraction**

Denison Street, Deakin ACT 2600

P. 02 6202 6850

# Taxi Subsidy Scheme

## What is it?

The ACT Taxi Subsidy Scheme (TSS) provides financial assistance to ACT residents with a disability or significant mobility restriction preventing them from using public and community transport. The TSS supports community members by making accessible transport options more affordable. This assists members to attend activities such as medical appointments, employment commitments, and social and family gatherings.

From 1 July 2024, the subsidy amount will increase from a maximum of \$28 per trip for 50% members to a maximum of \$29 per trip. For 75% members, this will increase from a maximum of \$43 per trip to a maximum of \$44.50 per trip.

The trip allocation provided under the TSS is a maximum of 854 trips per financial year. The trips are pro-rated depending on when the membership starts and ends.

## Who is eligible?

To be eligible for the ACT Taxi Subsidy Scheme, you must:

- have a severe or profound activity limitation that prevents you from using public transport. Such limitations include:
  - severe mobility limitations;
  - legal blindness or severe vision impairment;
  - cognitive, intellectual or psychiatric disability; and
  - severe and uncontrolled epilepsy.
- be a permanent resident of the ACT, or an asylum seeker with proof of status from Companion House; and
- not be a member of an interstate taxi subsidy scheme.

## How do I apply?

The application form is available [here](#) or by contacting the Taxi Subsidy Scheme Office on the details below.

Please note that Part B of the application form must be completed and signed by an authorised medical practitioner or occupational therapist.

## Who runs it?

ACT Revenue Office  
PH: (02) 6207 0028 - Select Option 5  
Email: [concessions@act.gov.au](mailto:concessions@act.gov.au)

Please follow this link for more information.

[Taxi Subsidy Scheme | ACT Revenue Office - Website](#)

## Information for year 12 school leavers

Please share with year 12 students who will be making the transition soon from school to their lives as adults. You can also use these resources for promotion throughout 2025 and for your next cohort of year 12s.

### *Information about leaving school*

The [Services Australia website](#) has some great information to support you finishing secondary school, whether you are interested in working, doing an apprenticeship or traineeship, or doing further study.

### *Need help to continue studying?*

Discover the main payments available: [Youth Allowance for students and apprentices](#) and [ABSTUDY](#). Learn about other types of financial help that are available from government, on the [Study Assist](#) website.

### *Medicare benefits*

If you haven't already, you need to add a bank account to your Medicare account to get Medicare benefits. You need to do this whether you have your own Medicare card or choose to stay on your parents' card. Find out more at [getting Medicare benefits](#).

### *Helpful resources*

The [School Leavers Information Kit](#) (SLIK) has been updated and explains Centrelink payments and how to get started with myGov. As you make your next move, the SLIK can help you uncover all the education, training, and employment options available to you.

# Imagine More : Customised Employment



Finding meaningful work can be tough, but Customised Employment tailors jobs to people's strengths and interests, helping many—including those with developmental disability—find fulfilling work or start a small business.

Explore how Customised Employment could work for you or your family member by joining our upcoming interactive online webinars. **Register for these at [imagemore.org.au/events](https://www.imagemore.org.au/events)**

## Ten top tips for students with disability thinking about work

Wednesday 25 October, 4:00 pm - 5:00 pm AEDT

Learn practical tips to help your child find and succeed in employment, tailored for families of students with disability.

## Get stuff done day

Monday 4 November, 10:00 am - 4:00 pm AEDT

Join us for a hands-on session where you can work on your Customised Employment plans, ask questions, and make progress. Bring your ideas, and we'll help you turn them into action.

## Imagining a good life and meaningful work

Monday 11 November, 4:30 - 5:30 pm AEDT

Learn how to create a positive vision for your or your family member's future, including work success stories and interactive exercises to help shape a vision statement.

## Finding quality support for customised employment using NDIS funding

Monday 18 November, 4:00 - 5:30 pm AEDT

Gain insights on engaging employment support through the NDIS, tips for strong NDIS applications and finding the right job mentor.

## Getting started with customised employment

Monday 25 November, 4:00 - 5:30 pm AEDT

Explore the discovery process to identify work related interests, conditions for success, and contributions, with practical exercises to start building a discovery profile.

## Finding customised employment and work

Monday 2 December, 4:00 - 5:30 pm AEDT

Learn strategies for job development, creating visual resumes, and having effective conversations with employers to secure work experience or paid jobs.

## Setting up a job for success

Monday 9 December, 4:00 - 5:30 pm AEDT

Understand how to prepare for success in a new job, covering teaching tasks in the workplace, and long-term growth and development in the workplace.

**To find out more, contact Fiona McIntosh : [fiona@imagemore.org.au](mailto:fiona@imagemore.org.au)**

# HOW FEROS CARE CAN SUPPORT SCHOOLS



## Information Sessions and School Events

Information sessions and school events are conducted at schools. These are hosted at the school for Feros Care to conduct capacity building activities about the NDIS.

Feros Care can provide support and participate in:

- ✓ School expos
- ✓ Transition meetings with Inclusion Support Teams
- ✓ School open nights/parent forums
- ✓ Employment pathways information sessions
- ✓ Transition to post-school employment/training information sessions

Who is it for?

STUDENTS FAMILIES/CAREGIVERS  
TEACHERS/SCHOOL STAFF

## Co-locations

Co-locations are engagement activities that are held by Feros Care staff within schools.

A drop-in co location is situated within the school, where stakeholders attend the sessions to have confidential conversations with Feros Care.

Feros Care staff members will be available on school premises for agreed regular periods, booked, or walk-in sessions.

Who is it for?

STUDENTS FAMILIES/CAREGIVERS  
TEACHERS/SCHOOL STAFF

## Staff Professional Learning

Staff professional learning provides a set of tools, resources, and training sessions designed for staff members including teachers, school leaders and other school staff to learn more about the NDIS.

The aim is to build capacity in understanding and navigating the scheme.

Who is it for?

TEACHERS/SCHOOL STAFF  
INCLUSION SUPPORT TEAMS  
SCHOOL LEADER Cs  
DISABILITY EDUCATION PROGRAM STAFF  
DISABILITY EDUCATION COORDINATION OFFICERS  
LEARNING SUPPORT ASSISTANTS  
TRANSITIONS & CAREERS OFFICERS  
CAREERS ADVISORS



**Jigsaw**

# Reshaping the pathway to open employment.



## **We want to empower your clients to achieve their employment goals.**

We believe people with disability should be fully included in the workforce. Our proven pathway is designed to break down the barriers people face in finding and keeping a mainstream job.

## **Who does Jigsaw support?**

We welcome all people of working age with disability but typically support people aged 16 - 29 years old.

We are NDIS funded, and participants can draw from several categories under Core and Capacity Building, including Finding and Keeping a Job (FAKAJ) and School Leaver Employment Supports (SLES), to attend Jigsaw. Our trainees usually attend Jigsaw two or three days a week, 9 - 3 pm.

# What makes Jigsaw different?

Jigsaw is a social enterprise that revolutionises the way people with disability prepare for the workforce by embedding an innovative training program, tailored to each individual's needs and abilities, within a real business.

We believe people prepare best for work through work. Different from a Disability Employment Service (DES), our three-stage model supports trainees through:

- Jigsaw Academy: training in 20 core soft skills, alongside work experience. These skills include teamwork, punctuality and professional communication and are mapped against corporate and government entry-level roles.
- Jigsaw Digital: award wage employment working on client contracts for our digitisation and information management business, and
- Jigsaw Connect: support to secure and retain mainstream employment with a disability-aware, inclusive employer, when each individual is ready.



Since 2014, Jigsaw has supported more than 900 people with disability on their pathway to mainstream employment at award wage. Of those employed or transitioned into employment by Jigsaw, 91 per cent retain their position to this day, outperforming existing disability employment models.

## We work collaboratively with the allied health community.

When a trainee joins our service, with their consent, we collaborate with their allied health practitioners (e.g. speech pathologist, OT, psychologist) to ensure we are working holistically to meet the person's goals and maximising their NDIS funding.

## Do you have a client who would benefit from Jigsaw?

If you have a client who has the goal of mainstream employment and believe they would benefit from joining Jigsaw, please [click here](#).

## Contact us.

t: 1300 166 734 e: [hello@jigsawaustralia.com.au](mailto:hello@jigsawaustralia.com.au)  
w: [jigsawaustralia.com.au](http://jigsawaustralia.com.au)



Sydney | Brisbane | Melbourne | Adelaide | Canberra | Online

Jigsaw is a social enterprise empowered by Fighting Chance. Fighting Chance builds social businesses to create a truly inclusive economy where people with disability have unbridled access to opportunity, dignity and prosperity.

Empowered by  
**FIGHTING  
CHANCE**

# Jigsaw

## Shaped by action.



## Introducing Jigsaw Academy.

People with disability should be fully included in the Australian workforce. Jigsaw's workplace-based training program is designed to break down the barriers that stop you from finding and keeping a mainstream job - by preparing you for work, through work.

## Achieve your employment goals with Jigsaw.

At Jigsaw you will:

- ✓ Master transferable skills to help you in any workplace
- ✓ Put these into practice from day one with work experience in Jigsaw Digital
- ✓ Progress to paid, award-wage employment with Jigsaw
- ✓ Transition to mainstream employment

All at your own pace.



## How does it work?

When you join Jigsaw, you'll work on 20 employment capabilities through group sessions, one-to-one coaching and online learning.

These 20 capabilities cover the core skills needed for government and corporate entry-level positions, such as communication, accountability, focus, problem-solving and more.

Your training and work experience will take place in Jigsaw's commercial document and data management business, Jigsaw Digital.

You'll then put your training into action with paid employment which delivers on contracts for Jigsaw's paying customers, and leave Jigsaw with employment experience on your resume.

When you're ready, we'll support you to access our network of employers and transition into a mainstream role.



## Join Jigsaw using your NDIS funding today!

NDIS participants can use SLES, Finding and Keeping a Job, Capacity Building and Core Supports to attend Jigsaw. We can also provide free support to individuals to apply for the NDIS if required.

### Contact us.

t: 1300 166 734

e: [hello@jigsawaustralia.com.au](mailto:hello@jigsawaustralia.com.au)

w: [jigsawaustralia.com.au](http://jigsawaustralia.com.au)



Sydney | Brisbane | Melbourne | Adelaide | Online

Jigsaw is a social enterprise empowered by Fighting Chance. Fighting Chance builds social businesses to create a truly inclusive economy where people with disability have unbridled access to opportunity, dignity and prosperity.

Empowered by  
**FIGHTING  
CHANCE**






**Here To Help**



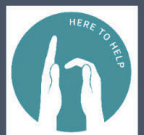
## Contact

**Our staff are experienced disability support workers, hold WWVP, police checks and first aid certificates.**

-  [bookings@H2Hsupports.com.au](mailto:bookings@H2Hsupports.com.au)
-  Sheryl 0423 492 021
-  244 Kambah Pool Road Kambah

## Here To Help Animal Connections

*Build New Social Connections  
Increase Confidence  
Develop Skills  
Have Fun*





At H2H Animal Connections, we prioritise respect, honesty, trust, and understanding in all our interactions with individuals. Our goal is to empower individuals, boost their confidence, and facilitate skill development.



→ **Tuesday Group 8-12 years**

From 3:30pm - 5:30pm  
(During School Term)

→ **Thursday Group 13-18 years**

From 3:30pm - 5:30pm  
(During School Term)

→ **Saturday Family Open Day**

From 9:00am - 11:00am  
From \$25pp

→ **Special groups or private bookings available on request**

→ **School holiday programs will also be available**

For more information please contact  
Sheryl on  
**0423 492 021**  
or [bookings@h2hsupports.com.au](mailto:bookings@h2hsupports.com.au)

We provide a serene and beautiful environment where you can learn about animals. Our experienced staff will guide you through hands-on experiences, including brushing, walking, and feeding the animals.

NDIS registered and wheelchair accessible.



Our goal is to foster new social connections, boost confidence, develop skills, and above all, ensure a fun experience for all.