

Principals Report



Please note that The Woden School is a nut-free zone. We appreciate parents not providing peanut butter, Nutella or similar sandwiches as we have some students and staff with severe allergies to these products. Please check that any cakes, chocolates and any food products



NUT FREE ZONE



TWS Future of Education



TWS Student Handbook

Hello again TWS community,

2024 is a particularly big year for us at Woden - in fact it is our 50th birthday! This year we are planning a huge celebration to commemorate our golden jubilee. This has given us an opportunity to take a walk down memory lane, and uncover some amazing history. Our school has certainly evolved over the half century, and we are looking forward to including the community in our celebration.

Also around the corner is our annual Bricks event on the weekend of the 25th May. This is a fantastic community event, run by the P&C to support The Woden School. There is a huge amount of work involved in bringing this event together and if you are able to contribute in any way please shoot me an email and I will put you in touch with the fabulous P&C.

We have some good news with our infrastructure projects. We have approval to build a digging pit addition to our playground, a gym upgrade and new shade areas for our senior and junior courtyards. These capital works should all commence soon and hopefully be complete by the year's end.

I would like to celebrate our new teacher librarian Norma. Norma joined us this year and has already had a huge impact on our library space. All classes are timetabled in the library and we are increasing our range of quality literature for learning. I encourage you to come and see this space and even offer a hand reading with our students. If this is something that you would be interested in please drop Norma or I an email.

As always please do not hesitate to contact me if you would like to know more.

Yours Sincerely,

James Malone

Principal

James Malone

Deputy Principal

Laura Simsen

Business Manager

Jenna Blake

Executive Teachers

Nicole Terry

Moira Beverley

Tina Wilson

Support Assistant's 4

Juniors: Emma Schirmer

Middles: Nat Burke

Seniors: Cameron Sant

School Psychologist

Jon Schwartz

School Pathologist

Leanne Shrapnel

Occupational Therapist

Annalise Korsch

Front Office

Narelle Leonard

Bethany Turner

Keshap Mokatan

Sandra Cusack



UPCOMING EVENTS

Term 1 Finishes	12 April
Pupil Free Day	29 April
Term 2 Starts	30 April
Bricks	25-26 May
Canteen	Wednesdays
Disco	Wednesdays

Are you feeling stressed, worried, sad, lonely or anxious?

You are not alone. This pandemic has been a very troubling and worrying time for everyone. We'd like to show you some online resources you can access if you are feeling any of these emotions.

Please access these, with the support of a parent or carer if needed, if you need some information, tips, and tricks to help you ease some of the discomfort caused by experiencing these (very normal) difficult emotions.

Reach Out resources for young people 14 - 25 (via Beyond Blue website portal)

<https://coronavirus.beyondblue.org.au/managing-my-daily-life/young-people-aged-14-25.html>

Head to Health

<https://www.headtohealth.gov.au/>



Our Priorities 2022—2026

1. Engaging Curriculum and pedagogies
2. Student voice and agency
3. Student centred learning communities

Important Contacts

Front Office

6142 0200

TWS@thewodens.act.edu.au

Special Needs Transport

6205 3555

transit.act.gov.au

Q City

6128 9313

qcitytransit.com.au

Communities @ Work After School Contact

0417 043 761

www.commsatwork.org

The Woden School social media

Facebook

The Woden School

<https://www.facebook.com/TheWodenSchool/>

**The Woden School turns
50 this year**



IMPORTANT NOTICES

Pupil Free Days 2024

Monday 29th April, Monday 22nd July, and Monday 14th October

Immunisations 2024

Year 10: Wednesday 13 November

2023 Yearbook \$20

Limited stock available, get yours now.

Parent Car Pick ups:

Are to occur AFTER 3pm please, unless otherwise organised with the front office. This is so buses have time to be loaded and cleared to allow for a safe transition home. Please **do not leave your car**. Pull up along the front apron and your young person will be called.

Please notify school office of any absences before 9.30am.

No student will be transitioned across the car park.



**The Woden School turns
50 this year**



THE WODEN SCHOOL NEWS CREW

MEET THE WODEN SCHOOL NEWS CREW! A NEW PROGRAM ESTABLISHED IN THE JUNIOR COHORT WHERE STUDENTS ARE ABLE TO INFORM THEIR PEERS ON WEATHER UPDATES, SCHOOL EVENTS, AND WAYS THEY CAN ACT ON OUR RISE EXPECTATIONS THROUGH OUR 'SKILL OF THE WEEK'. THIS TERM WE ARE FOCUSING ON RESPECT AND DIFFERENT WAYS WE CAN SHOW THIS DURING THE DAY.



AS WE EXPLORE THE SCHOOL, WE CONDUCT INTERVIEWS WITH STUDENTS FROM DIFFERENT COHORTS TO SEE WHAT'S HAPPENING THROUGHOUT OUR COMMUNITY.

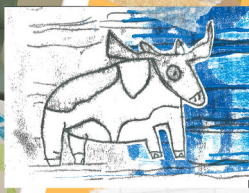
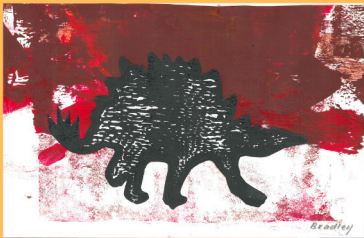


WE LOVE DRESSING UP IN OUR FINEST REPORTING GEAR AND BEING A PART OF THE CREATIVE PROCESS!



RESPECTING OUR TEACHERS SUPPORTS OUR LEARNING AND SHOWS WE CARE ABOUT OUR EDUCATION





Junior Art

A lot of creativity happening in the Art elective.

- Over the last few weeks, we have:
- Sewn collages together.
- Done some sensory painting.
- Tried printing dinosaurs.
- Stamp making and printing patterns.





SENIOR ART



Many forms of expression happening in Art. Over two weeks, we looked at the Canberra landscape, looking at the colours of our land and creating indigenous inspired paintings.

We have been looking at many types of printing techniques, foam, mono and lino printing. Making beautiful patterns. One of the senior classes, went for a walk last Friday and took photos of the surrounding trees, we then used those photos to create mono prints.

Projects in the workshop are being completed and the vegetable gardens have been prolific.

As the summer season comes to an end we are now planting for autumn.

The canteen has made use of the vegetables we have been producing, especially the tomato's. Pumpkins will be ready soon.



S1 formally known as S2

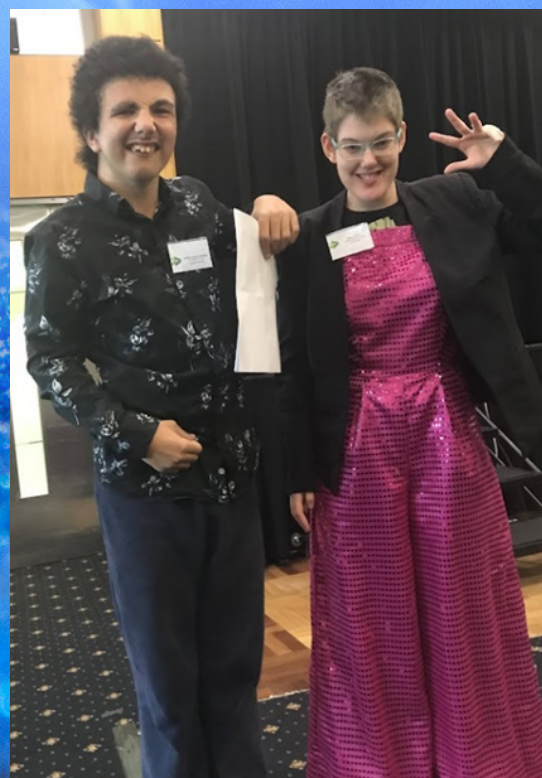
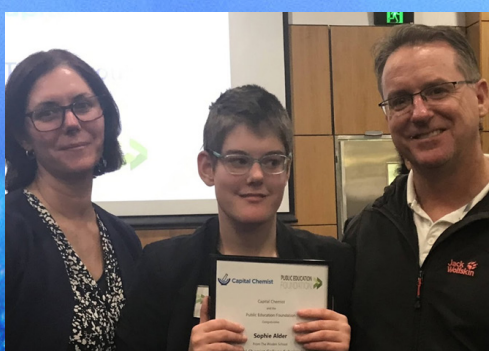


CAPTIAL CHEMIST AWARDS

Three of our college students were awarded Capital Chemist Scholarships. These are presented to three outstanding students from each of the Public Colleges in ACT.

Our amazing students this year receiving the scholarships are:
Sophie Adler, Griffin Farrelley and Ryan Blizzard.

Sophie and Griffin were at the Hellenic club to receive their awards.
Congratulations Sophie, Griffin and Ryan.





WE NEED YOUR HELP

BRICKS will be held on
25th - 26th May 2024

For BRICKS 2024 preparation many hands make light work and we would really appreciate any help you are available to provide. Please follow this link and register what you're available to help with:

vunteersignup.org/EDQCY

BRICKS 2024

Saturday 25th May & Sunday 26th May

The buzz is getting louder, BRICKS 2024 is just 6 weeks away! The P&C Committee is looking forward to seeing our families and the wider community join in the fun. Come along and check out the awesome Lego displays by our friends at the Canberra Lego User Group (CLUG). Check out our Facebook Page at <https://www.facebook.com/wodenbricks/> like, follow and share.

There is still a lot of planning and preparation happening so please check out some of the ways you can help make this event a success.

Tickets on sale now!

Scan the QR code to purchase your tickets to BRICKS 2024.

The more the merrier, we would love if you could share the QR Code on your social media accounts and invite all your friends and family to join us.



Event Roster

It is a really fun event and many hands make for light work, if you can spare a couple of hours to help over the weekend please follow this link <https://volunteersignup.org/EDQCY>

Cake Stall

Turn on the ovens, whip out the flour & butter! The cake stall is super popular and we tend to sell out fast. Donations of cakes, slices, muffins and other baked goods can be brought to the school on Friday 24th May or over the weekend. **Please ensure that your donations have all ingredients listed.**

Lucky Dips

We are on the hunt for small individual items eg: pots of playdough, lollipops, bubble wands, stamps, fidget toys, craft items etc to use as prizes for the Lucky Dips. If you are able to help please send in your donations to the Front Office.

Plant Stall

If you have a green thumb we will be looking for donations of plants to be delivered to the school on Friday 24th May or over the weekend.

Book Stall

We would love if you could rummage through your book collection and pass on any pre-loved books that are in good condition. Donations can be brought to the Front Office.

Chocolate Melts

Each year our Lego chocolates are a hit with the kids. If you're able to donate a packet of milk, white or dark chocolate melts that would be greatly appreciated. Please send in to the Front Office.

The Woden School Canteen Menu

Term 2, 2024 | Food freshly prepared by the student canteen work team



IMPORTANT: Recess can be either pre-ordered or purchased over the counter.
Lunch must be pre-ordered.

HOW TO ORDER

Orders must be placed in the bucket at the front office on Wednesday mornings.
Clearly write on a paper bag: name, year, recess & lunch order with amount included.
If purchasing weekly special, please state preference for meat or vegetarian option.

Our canteen only runs on WEDNESDAYS

Drinks (available at recess and lunch)

Juice popper	\$2.00
Milkshake (chocolate/strawberry/caramel)	\$3.00
Berry smoothie	\$3.00
Water 250ml	\$1.00

Recess only

Mini pizzas	\$2.00
Biscuits	\$3.00
Jelly Cup	\$1.00
Muffin	\$1.50
Sausage roll/Spinach and feta roll	\$3.00
Hot chips	\$2.50
Cheese toastie Ham/Tomato	\$3.00
Soup of the day	\$2.50

Lunch on

Sandwiches & wraps	\$5.50
Ham	
Ham & Cheese/ Ham, Tomato & Cheese	
Vegemite	
Salad Sandwich	
Vegemite and cheese	

WEEKLY LUNCH SPECIALS

\$8.00

Week 1: Pasta and meatballs

Week 2: Tacos

Week 3: Falafel wrap

Week 4: Chicken pot pie with
roasted vegetables

Week 5: Beef empanadas

Week 6: Pumpkin risotto

Week 7: Meat pie and chips

Week 8: Korean fried chicken
burger

Week 9: Pumpkin arancini balls
with salad

Week 10: Thai red curry with rice

*Vegetarian/Gluten Free options
available for lunch specials*

Parent Portal pre-launch school communication materials

School newsletter content

Sign up now to access Parent Portal



ACT
Government

Digital Account

Term 2 we are introducing a new Parent Portal, a secure online platform used to share student information between you and your child's teachers.

Using the Parent Portal on your mobile phone, tablet or computer, you will be able to:

- notify us if your child is sick or explain an absence
- book parent-teacher interviews
- receive academic reports
- receive our school newsletter
- receive messages from your child's teachers
- make payments
- access the school calendar and your child's student timetable.

You can start the sign up and identity verification process now so you're ready to go. Head to the Education Directorate website [Parent Portal page](#) for all the details.

Attendance and Absence Notification Requirements

Why is attending school important?

Going to school every day is the single most important part of your child's education, they learn new things every day. Children and young people who regularly attend school and complete Year 12 or an equivalent qualification have better health outcomes, better employment outcomes, and higher incomes across their lives.

What do I need to do if my child is going to be absent from school?

If your child is sick or absent, you are required to notify the school as soon as possible **on the day of absence** using one of the following methods:

- a) **a written explanation** via a note, email or text message containing the student's name, date of absence(s) and reasons for absence(s)
- b) **a verbal explanation** through either a phone call or visit to the school
- c) any other form of **communication agreed by the principal**.
- d) **a medical certificate** - principals may request medical certificates or other documentation when absences explained as being due to sickness indicate a pattern of non-attendance or are greater than 10 consecutive school days in duration.

What is my responsibility?

You are legally required to ensure your child attends school every day or you must provide an explanation for their absence. You should let the school know in advance of any upcoming absences or let them know in the morning if your child won't be at school. In order for schools to implement the same day notification requirement, it's essential that you provide the school with your most up-to-date

contact details. Generally, one notification will be sent per family. Should there be circumstances that require both parents/carers to be notified, please contact the school to make the necessary arrangements.

Why do I need to notify the school if my child is absent?

Schools are legally required to maintain an accurate register of attendance of every student on every day when the school is open for attendance. Notifying the school of your child's absence either prior to, or on the day that they will be away, helps ensure the safety and wellbeing of children and will fulfil your legal responsibility.

Schools contact parents/carers as soon as practicable on the same day of an unexplained student absence. If your child is absent on a particular day and you have not contacted the school to explain why, the absence will be marked as unexplained.

What is the school's responsibility?

The school must notify you of an unexplained absence in relation to your child as soon as practicable on the same day. Schools will let you know either through SMS, phone call or email. If you can't be reached because the school does not have your correct contact details (i.e., changed phone number, SMS/email failure notification received etc.), the school will attempt to make contact with any emergency contact/s nominated on your child's file held by the school. Where possible, this contact will be made on the same day of the unexplained absence.

Where can I learn more about the process for managing student absences?

Ask your school for a copy of the ***School Attendance Procedures*** which outlines the school's procedures for monitoring, recording and following-up of student absences. Or alternatively refer to the ACT Education Directorate's [ACT Public School Attendance and Roll Marking Procedures](#).



If your child is sick, don't bring them to school.

**As our children return
to the classroom, it is
important we remain
vigilant about health
and hygiene.**

- If your child is sick,
they must not come
to school.**
- If your child becomes
unwell at school,
you will be asked
to collect them.**



DENDY

C I N E M A S



Sensory Screenings

All tickets are \$10

Proudly presented by the Marymead Autism Centre.

Sensory Screenings are tailored to meet the needs of families living with autism and other sensory needs. The program consists of family-friendly content and family classics.

Sensory Friendly Screenings provide a safe and accepting cinema environment, including dimmed lights (not total darkness) and reduced sound levels.

Immune Deficiencies Foundation Australia proudly hosts International Entertainment Australia's...

2024 RAZZAMATAZZ

SCHOOL HOLIDAY VARIETY SHOWS



A dynamic and inclusive live theatre show for all ages and abilities. Experience exciting acrobatics, mesmerising juggling and quick-witted comedy keeping you at the edge of your seats! Don't miss this high energy, world-class show!

A FREE EVENT with an accessible, flexible environment, and a relaxed attitude to audience noise and movement.

Featuring moving, flashing lights, upbeat and sometimes dramatic music.

Showtimes are approx. 1 hour with no interval.



DAY ONE: Tuesday 23rd April @ 11am, 1pm & 5.30pm

DAY TWO: Wednesday 24th April @ 11am & 1pm

LOCATION: The B-Queanbeyan Performing Arts Centre

COST: FREE – bookings are essential.

*Bookings from schools, organisations, carers and families are all welcome.



To book complimentary tickets, please email your order and details to meredithnewman@showintent.com.au or call / text **0404-367-782**



Watch highlights from past shows. Scan the QR code.



Magic Mania

Canberra Southern Cross Club

Please NOTE: This is an ANNOUNCEMENT ONLY, Your Ticket invite to follow closer to event.

SAVE THE DATE

Tuesday 25th June 2024

FREE TICKETS

Dear Families and Caregivers,

It is with great pleasure to announce that we have booked

Canberra Southern Cross Club, Woden this year for Magic Mania on

Tuesday 25th June 2024 at 11am

Of course, this is a **FREE** show for the members of your organisation and the show is as for the youngest and oldest of us. We would like to see a record number in attendance this year again, and as I am sure you know, the more the merrier.

Please pencil this date in your calendar so all can enjoy the great event?

We will be in touch later in the year to find out how many tickets you may require for which show time.

Regards,

Anastasia K

Magic Mania

anastasia@magicmania.com.au



**Please note: This is an Announcement ONLY,
Your Ticket invite to follow closer to event.**

CYCLOPS

YOUNG CARERS PROGRAM

WHO ARE YOUNG CARERS?

Young carers are young people aged up to 25 years old who care for a family member experiencing a physical or intellectual disability, mental health issues, alcohol and other drug related issues, and/or chronic illness.

WHAT DO YOUNG CARERS DO?

Young carers take on a broad range of responsibilities. These can include:

- Shopping
- Cooking
- Cleaning
- Paying bills & managing finances
- Assisting with showering & toileting
- Giving medication
- Organising transport
- Attending medical appointments
- Monitoring health & safety of family members
- Managing crisis situations
- Supervising siblings
- Emotional support

CYCLOPS is a free support service that helps young carers & their families.

CYCLOPS offers support that can help make life easier and promotes opportunities for young carers to be more involved in community life.

CONTACT US

e: cyclops@anglicare.com.au

a: 30 Scotts Crossing, Civic ACT 2601

w: www.anglicare.com.au

p: (02) 6232 2488

f @CyclopsACT



HOW CAN CYCLOPS HELP?



CASUAL SUPPORT

Someone to talk to, and help to deal with day to day problems.

CASE MANAGEMENT

When things get complicated CYCLOPS can help co-ordinate supports for the whole family.

ADVOCACY

To help you say what you want to say, if you don't know how.

EDUCATION SUPPORT

Help your school to understand your caring role if it is impacting your education.

SOCIAL GROUPS

Meet others who are or have gone through similar things.

SCHOOL HOLIDAY ACTIVITIES

A chance to have a break and try new things.

INFORMATION

Services who can help and places to go.

REFERRAL

If we can't help you, we'll find someone who can.





SCHOOL HOLIDAYS AT YERRABI



SCAN ME

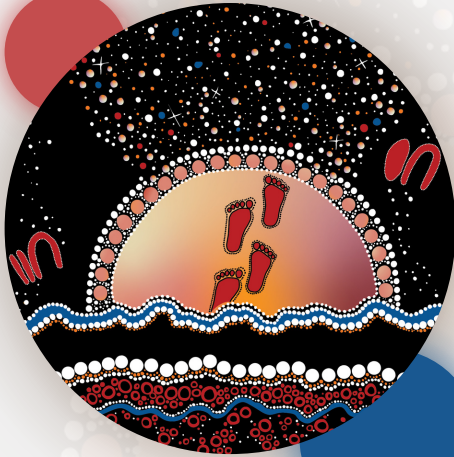


Parent/carers must stay and be with their kids

Activities on offer:

- Lawn games
- Craft activities
- Kids cooking classes
- Early childhood activities
- Learn Wiradjuri language

... and more



Join us at



Yarramundi Cultural Centre

245 Lady Denman Drive ACT 2601

Wednesday 24 April

10:30-3:00

A culturally safe experience

Lunch, morning and afternoon tea provided

Fun community activities



SCHOOL HOLIDAY Activities

Monday
15 April & 22 April

Independence Program:
Travel training, Self-care and
Communication

Wednesday
17 April & 24 April

Employment Skills:
First impressions, Woolworths training &
Positive thinking

Thursday
18 April & 25 April

Employment Skills:
First impressions, Woolworths training &
Positive thinking

Friday
19 April

Social Outing:
King Pin Bowling

Friday
26 April

Social Outing:
National Museum of Australia



Register with Sarah Kingwell
Mobile: 0481 729 943; or
Email: sarah.kingwell@omnia-inclusive.com.au

Invitation to Omnia Inclusive Afternoon Tea

Afternoon tea to talk about how we support young adults to achieve their individual goals

Come and visit our office, and find out about our NDIS employment, social and independence supports!

Date: 28th February 2024

Time: 4pm- 5pm

Location: Omnia Inclusive Employment Solutions,
Level 3 - 64 Northbourne Avenue, Canberra

RSVP: By 23rd February 2024

nicki.lihou@omnia-inclusive.com.au or sarah.kingwell@omnia-inclusive.com.au

We look forward to connecting with you.

Jigsaw

Reshaping the pathway to open employment.



We want to empower your clients to achieve their employment goals.

We believe people with disability should be fully included in the workforce. Our proven pathway is designed to break down the barriers people face in finding and keeping a mainstream job.

Who does Jigsaw support?

We welcome all people of working age with disability but typically support people aged 16 - 29 years old.

We are NDIS funded, and participants can draw from several categories under Core and Capacity Building, including Finding and Keeping a Job (FAKAJ) and School Leaver Employment Supports (SLES), to attend Jigsaw. Our trainees usually attend Jigsaw two or three days a week, 9 - 3 pm.

What makes Jigsaw different?

Jigsaw is a social enterprise that revolutionises the way people with disability prepare for the workforce by embedding an innovative training program, tailored to each individual's needs and abilities, within a real business.

We believe people prepare best for work through work. Different from a Disability Employment Service (DES), our three-stage model supports trainees through:

- **Jigsaw Academy:** training in 20 core soft skills, alongside work experience. These skills include teamwork, punctuality and professional communication and are mapped against corporate and government entry-level roles.
- **Jigsaw Digital:** award wage employment working on client contracts for our digitisation and information management business, *and*
- **Jigsaw Connect:** support to secure and retain mainstream employment with a disability-aware, inclusive employer, when each individual is ready.



Since 2014, Jigsaw has supported more than 900 people with disability on their pathway to mainstream employment at award wage. Of those employed or transitioned into employment by Jigsaw, 91 per cent retain their position to this day, outperforming existing disability employment models.

We work collaboratively with the allied health community.

When a trainee joins our service, with their consent, we collaborate with their allied health practitioners (e.g. speech pathologist, OT, psychologist) to ensure we are working holistically to meet the person's goals and maximising their NDIS funding.

Do you have a client who would benefit from Jigsaw?

If you have a client who has the goal of mainstream employment and believe they would benefit from joining Jigsaw, please [click here](#).

Contact us.

t: 1300 166 734 e: hello@jigsawaustralia.com.au
w: jigsawaustralia.com.au



Sydney | Brisbane | Melbourne | Adelaide | Canberra | Online

Jigsaw is a social enterprise empowered by Fighting Chance. Fighting Chance builds social businesses to create a truly inclusive economy where people with disability have unbridled access to opportunity, dignity and prosperity.

Empowered by
**FIGHTING
CHANCE**

Jigsaw

**Shaped
by action.**



Introducing Jigsaw Academy.

People with disability should be fully included in the Australian workforce. Jigsaw's workplace-based training program is designed to break down the barriers that stop you from finding and keeping a mainstream job - by preparing you for work, through work.

Achieve your employment goals with Jigsaw.

At Jigsaw you will:

- ✓ Master transferable skills to help you in any workplace
- ✓ Put these into practice from day one with work experience in Jigsaw Digital
- ✓ Progress to paid, award-wage employment with Jigsaw
- ✓ Transition to mainstream employment

All at your own pace.



How does it work?

When you join Jigsaw, you'll work on 20 employment capabilities through group sessions, one-to-one coaching and online learning.

These 20 capabilities cover the core skills needed for government and corporate entry-level positions, such as communication, accountability, focus, problem-solving and more.

Your training and work experience will take place in Jigsaw's commercial document and data management business, Jigsaw Digital.

You'll then put your training into action with paid employment which delivers on contracts for Jigsaw's paying customers, and leave Jigsaw with employment experience on your resume.

When you're ready, we'll support you to access our network of employers and transition into a mainstream role.



Join Jigsaw using your NDIS funding today!

NDIS participants can use SLES, Finding and Keeping a Job, Capacity Building and Core Supports to attend Jigsaw. We can also provide free support to individuals to apply for the NDIS if required.

Contact us.

t: 1300 166 734

e: hello@jigsawaustralia.com.au

w: jigsawaustralia.com.au



Sydney | Brisbane | Melbourne | Adelaide | Online

Jigsaw is a social enterprise empowered by Fighting Chance. Fighting Chance builds social businesses to create a truly inclusive economy where people with disability have unbridled access to opportunity, dignity and prosperity.

Empowered by
**FIGHTING
CHANCE**



DISABILITY CAMPS COMING TO NSW!



Discover The Great Outdoors

Meet New Friends

Adventure For All

ACA-People Outdoors: NSW Camper E.O.I

ACA-People Outdoors: Referral Form



PEOPLE OUTDOORS - EXPERTS AT PROVIDING OUTDOOR EXPERIENCES FOR PEOPLE LIVING WITH DISABILITY

OUR PROGRAMS EXPLAINED

Weekend Camps (2 nights)

Weekend Camps commence on a Friday evening and concludes on a Sunday afternoon - A Perfect Weekend Away. Enjoy a mix of adventure based activities, time outdoors as well as a chance to spend time with like minded people.

OUR SUPPORT RATIOS EXPLAINED

1:3 Ratio

- A camper who is independent in all areas of personal care including toileting, showering and brushing teeth (may just require prompting).
- Can eat independently, make drinks for themselves and has good communication and social skills.
- Understands rules of the road, social settings and can stay with the group on outings.

1:2 Ratio

- Require prompting or some assistance with showering, toileting and brushing teeth.
- May require prompting to pick appropriate clothes and get ready for the day.
- May need supervision with eating or using cutlery.
- Requires closer supervision in the community during outings.

1:1 Ratio

- A camper who uses manual or electric wheelchairs and need assistance.
- A camper that needs full assistance with personal care - showering, toileting, brushing teeth and dressing.
- Has special requirements during meal times and needs assistance to eat.
- Requires full assistance and constant supervision in the community.
- May have limited social skills.
- May display behaviours of concerns.

**PLEASE CONTACT US TODAY IF YOU REQUIRE A
QUOTE FOR YOUR NDIS PLAN**



DO YOU KNOW A YOUNG PERSON PLAYING A CARING ROLE FOR A FAMILY MEMBER WITH A DISABILITY, ILLNESS INCLUDING MENTAL ILLNESS, OR ADDICTION?

THEY DON'T HAVE TO BE THE PRIMARY CARER TO QUALIFY FOR THE RANGE OF SUPPORTS AVAILABLE TO YOUNG CARERS IN THE ACT.

YOUNG CARER

INFO SESSION

WHERE: ONLINE
WHEN: MARCH 4TH, 2PM OR 6PM
WHO: ANY PARENTS, CARERS, OR FAMILY MEMBERS WHO ARE CONNECTED WITH A YOUNG PERSON PLAYING A CARING ROLE

JOIN OUR ONLINE INFO SESSIONS TO LEARN WHAT'S ON OFFER TO SUPPORT YOUNG CARERS, PRESENTED IN PARTNERSHIP WITH MALKARA SCHOOL AND THE WODEN SCHOOL

BY STAFF FROM ANGLICARE'S CYCLOPS PROGRAM, CARERS ACT'S YOUNG CARERS PROGRAM, AND VINNIES' ST. NICKS PROGRAM.



To RSVP, please contact cyclops@anglicare.com.au and advise of which online session you will be attending



St Vincent de Paul Society
good works

ANGLICARE
NSW SOUTH | NSW WEST | ACT

CarersACT



Here To Help



Contact

Our staff are experienced disability support workers, hold WWVP, police checks and first aid certificates.



bookings@H2Hsupports.com.au



Sheryl 0423 492 021



244 Kambah Pool Road Kambah

Here To Help Animal Connections

*Build New Social Connections
Increase Confidence
Develop Skills
Have Fun*





At H2H Animal Connections, we prioritise respect, honesty, trust, and understanding in all our interactions with individuals. Our goal is to empower individuals, boost their confidence, and facilitate skill development.



→ **Tuesday Group 8-12 years**

From 3:30pm - 5:30pm
(During School Term)

→ **Thursday Group 13-18 years**

From 3:30pm - 5:30pm
(During School Term)

→ **Saturday Family Open Day**

From 9:00am - 11:00am
From \$25pp

→ **Special groups or private bookings available on request**

→ **School holiday programs will also be available**

For more information please contact
Sheryl on
0423 492 021
or bookings@h2hsupports.com.au

We provide a serene and beautiful environment where you can learn about animals. Our experienced staff will guide you through hands-on experiences, including brushing, walking, and feeding the animals.

NDIS registered and
wheelchair
accessible.



Our goal is to foster new social connections, boost confidence, develop skills, and above all, ensure a fun experience for all.



Here to Help – Post School Program

Here to Help supports young adults transitioning from school to the next stages of life as an NDIS post-school provider. We specialise in addressing the unique goals of participants and their families, departing from the structured school environment.

Our Kambah campus at Westwood Farm is the learning hub, offering programs that enhance social-emotional skills, functional independence, and vocational capabilities.

- Our experienced staff utilize communication tools such as PODD, ProloQuo2Go, and Auslan, enhancing communication through AAC systems, gestures, signs, and speech. Participants engage in co-planning and executing daily tasks including meal preparation, shopping, and interactive community engagements.
- Practical skills are honed through activities such as shopping, cooking, and personal care, utilizing both campus and community resources. The scenic campus promotes engagement with nature, animal care, and creative pursuits, fostering a supportive atmosphere for relationship building.
- Committed to advancing social and economic inclusion, Here to Help offers work skills programs and partnerships with local enterprises, paving pathways to employment and enriched community involvement.

Here's what our post-school program offers:

- Personal Growth
- Skill Development
- Tailored Experiences
- Animal connections

These experiences provide an opportunity to expand horizons and soothe your spirit. For more details on how to join this unique experience, please contact admin@h2hsupports.com.au



Here to Help – Holiday Program

At our charming Wallaroo residence, nestled within the tranquil grounds, we've created a magical holiday experience tailored for school-aged children.

Here's a glimpse into our program, designed to spark joy and ignite curiosity:

Grow & Thrive: Our program is a launchpad for personal growth, helping kids step confidently into their next big adventure.

Skill Mastery: Through interactive play and teamwork, children sharpen their social-emotional abilities and practical life skills.

Creative Expressions: We believe every child is an artist. Our campus buzzes with activities including crafting, sensory play, painting, encouraging every young mind to create their masterpiece.

Animal Connections: Optional and always delightful, kids can bond with farm animals, learning care and compassion as they feed, groom, and play.

Our seasoned educators are adept in engaging young minds, using tools and techniques that make learning fun and effective. We're all about 'learning by doing' – whether it's whipping up a storm in the kitchen, navigating the exciting world of shopping, or crafting a community project.

At the heart of our holiday program is the belief that kids learn best when they're having fun. They'll embark on nature explorations, engage in sporting antics, and dive into cultural crafts, all while building lifelong friendships.

Enrol your child in our School Holiday Adventure Program and watch them flourish.

For more details on how to join this unique experience, please contact admin@h2hsupports.com.au



Here to Help – Animal Connections

Welcome to Animal Connections, where we're dedicated to fostering meaningful connections between people and animals. At H2H Animal Connections our aim is to challenge both children and adults to step beyond their comfort zones, embrace new experiences, and cultivate bonds with our awesome animals.

Scientific research underscores the therapeutic benefits of animal interaction, offering a calming and comforting respite from the stresses of everyday life. With our expert staff guiding the way, you can experience the relaxation, education, and enjoyment with a variety of farm animals, including cows, horses, goats, alpacas, donkeys, and more.

Whether you're petting, grooming, feeding, or simply enjoying their company, our animal encounters provide a unique opportunity to learn new skills while fostering a deeper connection with the natural world.

At Animal Connections, we welcome visitors of all ages, accommodating various group sizes and offering tailored bookings and personalised one-on-one sessions.

This experience will be both exciting and calming, as our animals enjoy your company as much as you will enjoy theirs. For more information, reach out to bookings@h2hsupports.com.au.

