

Principals Report



Please note that The Woden School is a nut-free zone. We appreciate parents not providing peanut butter, Nutella or similar sandwiches as we have some students and staff with severe allergies to these products. Please check that any cakes, chocolates and any food products



NUT FREE ZONE



TWS Future of Education



TWS Student Handbook

Hello again parents, carers and community members.

It's that time again! This weekend we will be hosting the biggest ever Bricks event at The Woden School. With more displays than ever before, this one is sure to be a great day out with the family. I hope to see you all here on the Weekend.

A big shout out to Snez and our fantastic P&C who have drummed up more media buzz than ever. They have been working tirelessly to make sure this event goes off with a bang and they have done an amazing job in fundraising this year. This work is greatly appreciated and funds go directly to providing more accessible recreational activities for our students. The big goal is to get started on the road to building a hydrotherapy pool on site.

I would also like to take this opportunity to thank Tina Wilson for the outstanding work she has done in the Senior school over the past 2 years. Tina has taken a position at Charnwood Dunlop School this year, and we wish all the very best in her future endeavours.

This term we are joined by Matt Marasco as the new leader of the Senior School. Matt joins us from Stromlo High School, and has previously worked at Black Mountain School. With a strong background in specialised education I am sure Matt will add significant value to The Woden School community.

Students' MyPath documents are complete, and we are working on getting these live to families ASAP. Hopefully we will be able to achieve this in the next few weeks. Unfortunately we have been met with some technical issues in achieving this, but we will keep you posted. These are looking fantastic and provide us with a great platform to track students' growth over their education and toward a future lifestyle vision.

As always please feel free to contact me if you would like to discuss anything about your child's education.

Yours Faithfully,

James Malone

Principal

James Malone

Deputy Principal

Laura Simsen

Business Manager

Jenna Blake

Executive Teachers

Nicole Terry

Moira Beverley

Matt Marasco

Support Assistant's 4

Juniors: Emma Schirmer

Middles: Nat Burke

Seniors: Cameron Sant

School Psychologist

Jon Schwartz

Occupational Therapist

Annalise Korsch

Front Office

Narelle Leonard

Bethany Turner

Keshap Mokatan

Sandra Cusack



UPCOMING EVENTS

Bricks	25-26 May
Reconciliation Day	27 May
Parent Portal Release	29 May
Kings Birthday	10 June
Canteen	Wednesdays
Disco	Wednesdays

Are you feeling stressed, worried, sad, lonely or anxious?

You are not alone. This pandemic has been a very troubling and worrying time for everyone. We'd like to show you some online resources you can access if you are feeling any of these emotions.

Please access these, with the support of a parent or carer if needed, if you need some information, tips, and tricks to help you ease some of the discomfort caused by experiencing these (very normal) difficult emotions.

Reach Out resources for young people 14 - 25 (via Beyond Blue website portal)

<https://coronavirus.beyindblue.org.au/managing-my-daily-life/young-people-aged-14-25.html>

Head to Health

<https://www.headtohealth.gov.au/>



Our Priorities 2022—2026

1. Engaging Curriculum and pedagogies
2. Student voice and agency
3. Student centred learning communities

Important Contacts

Front Office

6142 0200

TWS@thewodens.act.edu.au

Special Needs Transport

6205 3555

transit.act.gov.au

Q City

6128 9313

qcitytransit.com.au

Communities @ Work After
School Contact

0417 043 761

www.commsatwork.org

The Woden School social media

Facebook

The Woden School

[https://www.facebook.com/
TheWodenSchool/](https://www.facebook.com/TheWodenSchool/)

**The Woden School turns
50 this year**



IMPORTANT NOTICES

Pupil Free Days 2024

Monday 22 July, and Monday 14 October

Immunisations 2024

Year 10: Wednesday 13 November

2023 Yearbook \$20

Limited stock available, get yours now.

Parent Car Pick ups:

Are to occur AFTER 3pm please, unless otherwise organised with the front office. This is so buses have time to be loaded and cleared to allow for a safe transition home. Please **do not leave your car**. Pull up along the front apron and your young person will be called.

Please notify school office of any absences before 9.30am.

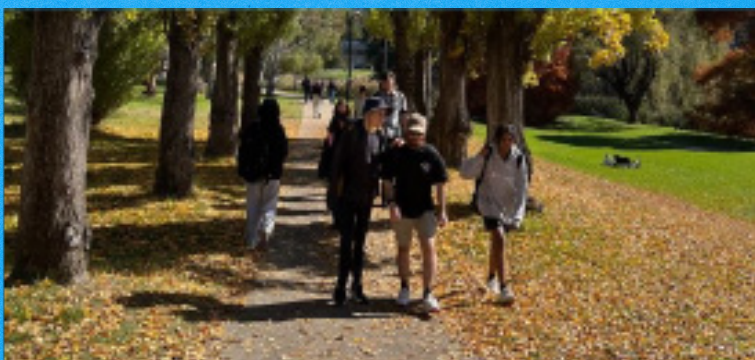
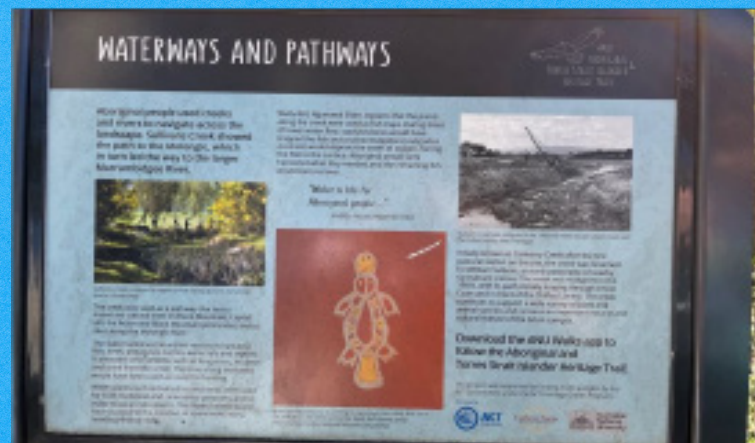
No student will be transitioned across the car park.



**The Woden School turns
50 this year**



LC4 restarted our weekly 'Out in the Community' excursions last week. The first place we visited was the ANU to explore the Aboriginal and Torres Strait Islander Heritage Trail. This included a walk along Sullivans Creek to Lake Burley Griffin as well as some places within the campus that highlight Indigenous peoples' historical and ongoing connection to the ANU campus lands.

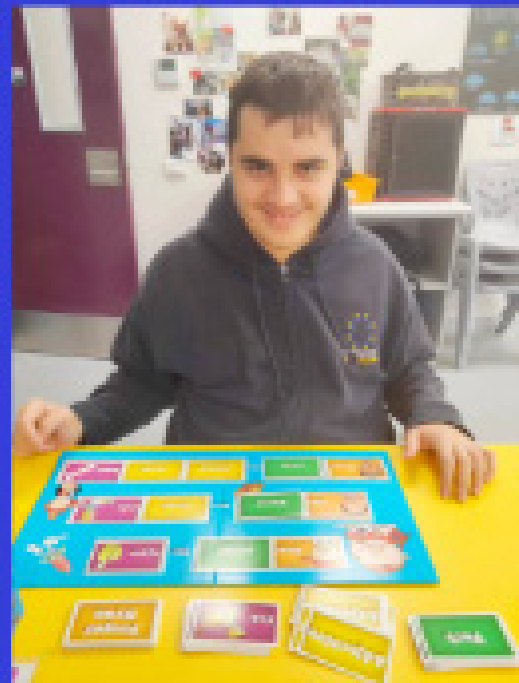
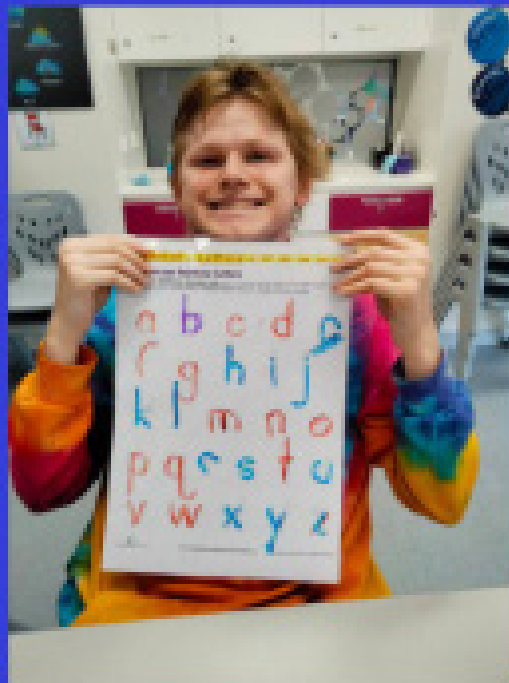


Technology

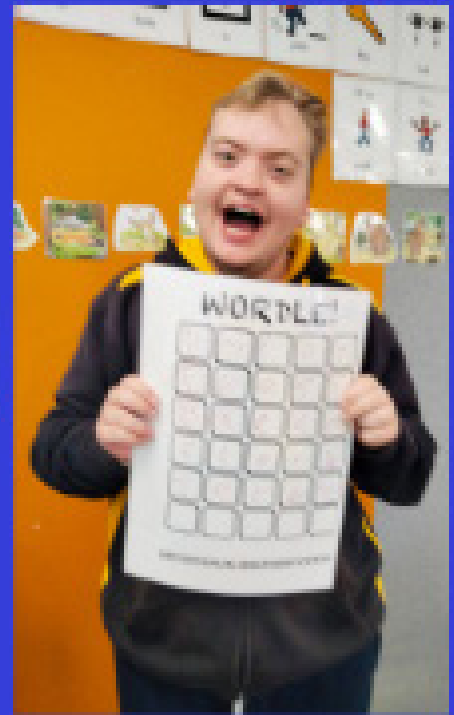
What a variety of things have been achieved so far in the workshops!

From book marks to tables to a bumper crop of tomatoes in the garden, the students have been very productive.





S1



Literacy
in S1

INTRODUCING



RACHEL HAPPY EASTER RABBIT



LACHIE ON LANGUAGE AND MATH



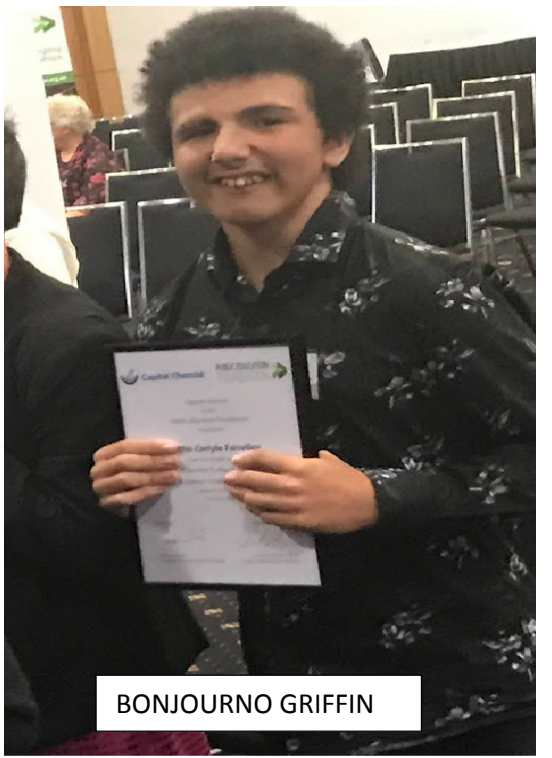
RYTON SUPER SPORT



JAMES ON DIDGERIDOO



ALEX – SONIC ACTION



BONJOURNO GRIFFIN



MORNING UNO WITH STUART AND JAMYANG

COLLEGE S2 Super Heros



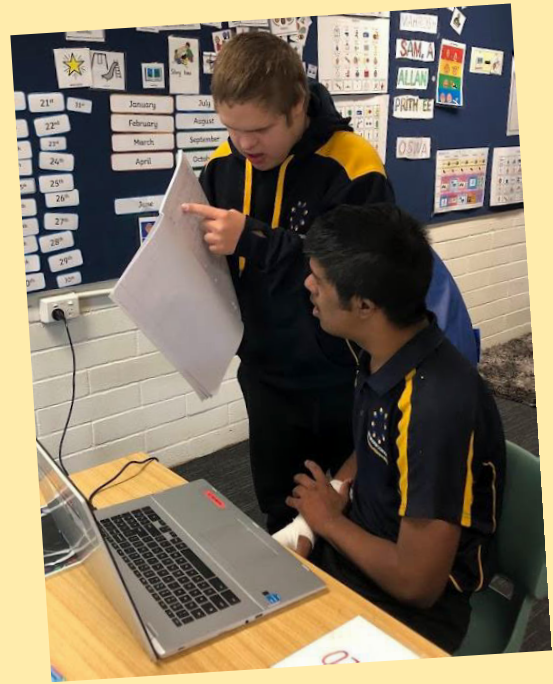
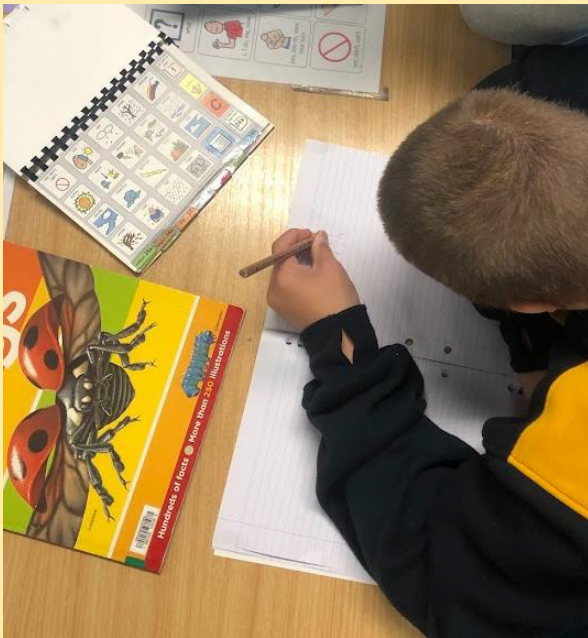
College Swimming Term 2



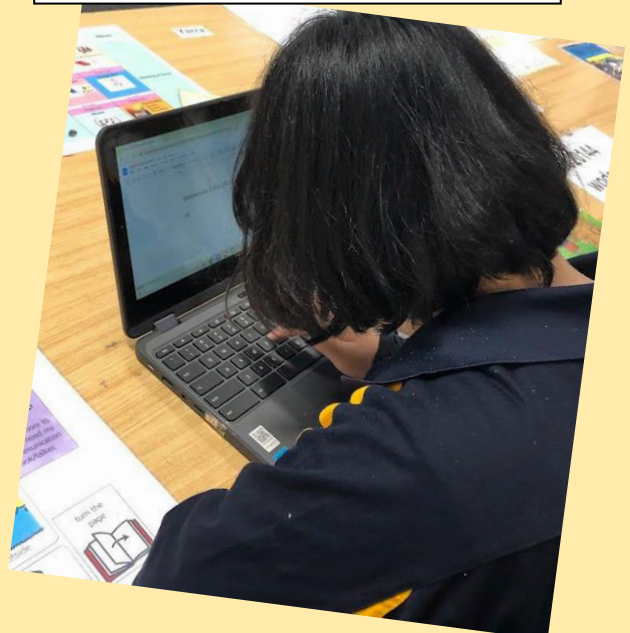
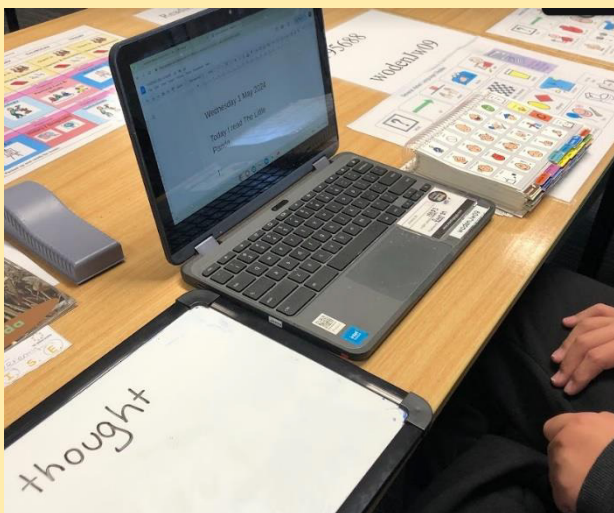
College had their first swimming excursion this year. It went off with a splash

National Simultaneous Storytime (NSS) Wednesday 22 May 2024





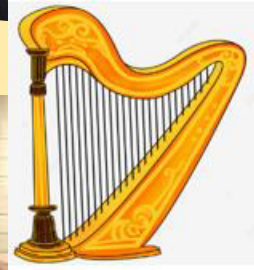
Room 17 have been working hard on peer to peer learning. We are using PODD (Pragmatic Organisation Dynamic Display) to inform our opinion and write sentences about the books we have been reading in class.



Canberra Symphony Orchestra



May visit





The young women from college join together on Friday afternoons for GIRLS CLUB

The Woden School Canteen Menu

Term 2, 2024 | Food freshly prepared by the student canteen work team



IMPORTANT: Recess can be either pre-ordered or purchased over the counter.
Lunch must be pre-ordered.

HOW TO ORDER

Orders must be placed in the bucket at the front office on Wednesday mornings.
Clearly write on a paper bag: name, year, recess & lunch order with amount included. If purchasing weekly special, please state preference for meat or vegetarian option.

Our canteen only runs on WEDNESDAYS

Drinks (available at recess and lunch)

Juice popper	\$2.00
Milkshake (chocolate/strawberry/caramel)	\$3.00
Berry smoothie	\$3.00
Water 250ml	\$1.00

Recess only

Mini pizzas	\$2.00
Biscuits	\$3.00
Jelly Cup	\$1.00
Muffin	\$1.50
Sausage roll/Spinach and feta roll	\$3.00
Hot chips	\$2.50
Cheese toastie Ham/Tomato	\$3.00
Soup of the day	\$2.50

Lunch on

Sandwiches & wraps	\$5.50
Ham	
Ham & Cheese/ Ham, Tomato & Cheese	
Vegemite	
Salad Sandwich	
Vegemite and cheese	

WEEKLY LUNCH SPECIALS \$8.00

Week 1: Pasta and meatballs

Week 2: Tacos

Week 3: Falafel wrap

Week 4: Chicken pot pie with
roasted vegetables

Week 5: Beef empanadas

Week 6: Pumpkin risotto

Week 7: Meat pie and chips

Week 8: Korean fried chicken
burger

Week 9: Pumpkin arancini balls with
salad

Week 10: Thai red curry with rice

*Vegetarian/Gluten Free options
available for lunch specials*

Parent Portal pre-launch school communication materials

School newsletter content

Sign up now to access Parent Portal



Term 2 we are introducing a new Parent Portal, a secure online platform used to share student information between you and your child's teachers.

Using the Parent Portal on your mobile phone, tablet or computer, you will be able to:

- notify us if your child is sick or explain an absence
- book parent-teacher interviews
- receive academic reports
- receive our school newsletter
- receive messages from your child's teachers
- make payments
- access the school calendar and your child's student timetable.

You can start the sign up and identity verification process now so you're ready to go. Head to the Education Directorate website [Parent Portal page](#) for all the details.

Suspension, Transfer or Exclusion of a Student in ACT Public Schools Policy

The Education Directorate has released its updated *Suspension, Transfer or Exclusion of a Student in ACT Public Schools Policy*.

ACT public schools work hard to support every student to achieve their best and meet their individual learning needs.

Schools use a range of prevention and early support approaches to manage student behaviours when they may impact on a student's ability to be positively engaged at school or impacts other students.

We recognise the importance of every child's right to a quality education. Suspension, transfer, or exclusion from school is not a punitive measure and will only be used for the purpose of providing the time necessary to ensure a safe and effective learning environment at school.

When this need arises, our schools work closely with students and their families to support them through this process and to support the continuity of learning for the student.

You can read the full policy on the [Education website](#).

If your child is sick, don't bring them to school.

As our children return to the classroom, it is important we remain vigilant about health and hygiene.

- If your child is sick, they must not come to school.**
- If your child becomes unwell at school, you will be asked to collect them.**



Drumming for Connection



Come along and make some noise, express yourself, meet likeminded parents, learn to drum, build connections, and have some fun!

Drumming for Connection is based on the DRUMBEAT program and is funded by the Healthy Canberra Grants Program.

This is a 6-week group for parents, with the aim of improving their emotional health and wellbeing, provide a space for shared lived experience, and to feel more connected to other parents, and the community.

Drumming for Connection themes include;

- Stress
- Systems in Life
- Harmony with Others
- Emotional Expression
- Identity & Values
- Relationship Issues

Drumming for Connection uses a framework of **fun** and **experiential learning** to draw participants' attention to connections between their experiences in the drum circle, and their relationships in the wider community.

To register your interest in the upcoming Drumming for Connection group at Malkara on

Term 3 - From Week 5 to Week 10 – 21 August – 25 September 2024

Wednesdays 1pm – 2.30pm

Please contact; info@malkara.act.edu.au

RSVP by – 7 June 2024

SING. DANCE. ACT.

**POP
CAMP**

POWER OF PERFORMANCE

HOLIDAY

PROGRAM



- Learn A Dance
- Learn A Song
- Learn A Script
- Perform In A Show
- Build Confidence
- Make Friends
- Have Fun!



Queanbeyan & Harrison



www.popcamp.com.au




BUILDING CONFIDENT KIDS

Feros Care and the Education Directorate are working together to support students, staff members and school communities to learn more about the National Disability Insurance Scheme (NDIS).

Feros Care is the Local Area Coordinator (LAC) in the ACT.

Their job is to help people with disability connect with services and can support people to request access to the NDIS so they can live healthy, happy lives.

An LAC will listen to you so they know what's important for you. They can also:

-  Help you connect with government and community services
-  Support you to apply for the NDIS
-  Support you to put your NDIS plan into action

Feros Care has developed a **NDIS School Engagement Kit** in collaboration with Education Programs and Services to strengthen the connection between students, staff members and school communities with the NDIS system.

Find out more

To find out more or book in one of Feros Care's offerings, contact the Feros Care team via email communityengagementact@feroscare.com.au or call 1300 986 970

 feroscare.com.au

FEROS CARE AND THE NDIS

How can we help schools?



Delivering the NDIS in your community



Delivering the NDIS in your community

HOW FEROS CARE CAN SUPPORT SCHOOLS



Information Sessions and School Events

Information sessions and school events are conducted at schools. These are hosted at the school for Feros Care to conduct capacity building activities about the NDIS.

Feros Care can provide support and participate in:

- ✓ School expos
- ✓ Transition meetings with Inclusion Support Teams
- ✓ School open nights/parent forums
- ✓ Employment pathways information sessions
- ✓ Transition to post-school employment/training information sessions

Who is it for?

STUDENTS FAMILIES/CAREGIVERS
TEACHERS/SCHOOL STAFF

Co-locations

Co-locations are engagement activities that are held by Feros Care staff within schools.

A drop-in co location is situated within the school, where stakeholders attend the sessions to have confidential conversations with Feros Care.

Feros Care staff members will be available on school premises for agreed regular periods, booked, or walk-in sessions.

Who is it for?

STUDENTS FAMILIES/CAREGIVERS
TEACHERS/SCHOOL STAFF

Staff Professional Learning

Staff professional learning provides a set of tools, resources, and training sessions designed for staff members including teachers, school leaders and other school staff to learn more about the NDIS.

The aim is to build capacity in understanding and navigating the scheme.

Who is it for?

TEACHERS/SCHOOL STAFF
INCLUSION SUPPORT TEAMS
SCHOOL LEADER Cs
DISABILITY EDUCATION PROGRAM STAFF
DISABILITY EDUCATION COORDINATION OFFICERS
LEARNING SUPPORT ASSISTANTS
TRANSITIONS & CAREERS OFFICERS
CAREERS ADVISORS

YOUNG CARERS PROGRAM

WHO ARE YOUNG CARERS?

Young carers are young people aged up to 25 years old who care for a family member experiencing a physical or intellectual disability, mental health issues, alcohol and other drug related issues, and/or chronic illness.

WHAT DO YOUNG CARERS DO?

Young carers take on a broad range of responsibilities. These can include:

- Shopping
- Cooking
- Cleaning
- Paying bills & managing finances
- Assisting with showering & toileting
- Giving medication
- Organising transport
- Attending medical appointments
- Monitoring health & safety of family members
- Managing crisis situations
- Supervising siblings
- Emotional support

CYCLOPS is a free support service that helps young carers & their families.

CYCLOPS offers support that can help make life easier and promotes opportunities for young carers to be more involved in community life.

CONTACT US

e: cyclops@anglicare.com.au

a: 30 Scotts Crossing, Civic ACT 2601

w: www.anglicare.com.au

p: (02) 6232 2488

f: @CyclopsACT



HOW CAN CYCLOPS HELP?



CASUAL SUPPORT

Someone to talk to, and help to deal with day to day problems.

CASE MANAGEMENT

When things get complicated CYCLOPS can help co-ordinate supports for the whole family.

ADVOCACY

To help you say what you want to say, if you don't know how.

EDUCATION SUPPORT

Help your school to understand your caring role if it is impacting your education.

SOCIAL GROUPS

Meet others who are or have gone through similar things.

SCHOOL HOLIDAY ACTIVITIES

A chance to have a break and try new things.

INFORMATION

Services who can help and places to go.

REFERRAL

If we can't help you, we'll find someone who can.





SCHOOL HOLIDAYS AT YERRABI



SCAN ME



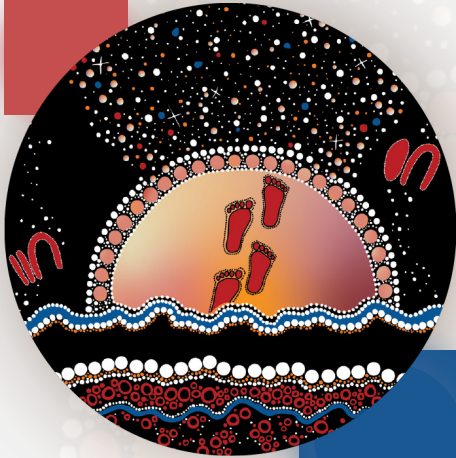
Parent/carers must stay and be with their kids

Activities on offer:

- Lawn games
- Craft activities
- Kids cooking classes
- Early childhood activities
- Learn Wiradjuri language



... and more



Join us at



**Yarramundi Cultural
Centre**

245 Lady Denman Drive ACT 2601

**Wednesday 24 April
10:30-3:00**



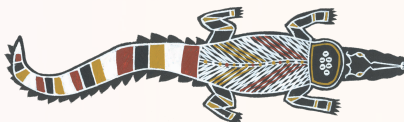
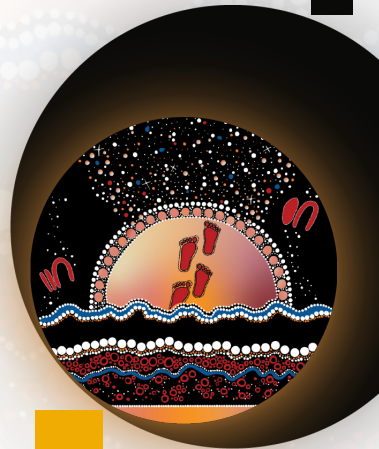
A culturally safe experience



Lunch, morning and afternoon tea
provided



Fun community activities



SCHOOL HOLIDAY Activities

Monday
15 April & 22 April

Independence Program:
Travel training, Self-care and
Communication

Wednesday
17 April & 24 April

Employment Skills:
First impressions, Woolworths training &
Positive thinking

Thursday
18 April & 25 April

Employment Skills:
First impressions, Woolworths training &
Positive thinking

Friday
19 April

Social Outing:
King Pin Bowling

Friday
26 April

Social Outing:
National Museum of Australia



Register with Sarah Kingwell
Mobile: 0481 729 943; or
Email: sarah.kingwell@omnia-inclusive.com.au

Invitation to **Omnia Inclusive** **Afternoon Tea**

Afternoon tea to talk about how we
support young adults to achieve
their individual goals

Come and visit our office, and find out about
our NDIS employment, social and
independence supports!

Date: 28th February 2024

Time: 4pm- 5pm

Location: Omnia Inclusive Employment Solutions,
Level 3 - 64 Northbourne Avenue, Canberra

RSVP: By 23rd February 2024

nicki.lihou@omnia-inclusive.com.au or
sarah.kingwell@omnia-inclusive.com.au

We look forward to connecting with you.



Jigsaw

Reshaping the pathway to open employment.



We want to empower your clients to achieve their employment goals.

We believe people with disability should be fully included in the workforce. Our proven pathway is designed to break down the barriers people face in finding and keeping a mainstream job.

Who does Jigsaw support?

We welcome all people of working age with disability but typically support people aged 16 - 29 years old.

We are NDIS funded, and participants can draw from several categories under Core and Capacity Building, including Finding and Keeping a Job (FAKAJ) and School Leaver Employment Supports (SLES), to attend Jigsaw. Our trainees usually attend Jigsaw two or three days a week, 9 - 3 pm.

What makes Jigsaw different?

Jigsaw is a social enterprise that revolutionises the way people with disability prepare for the workforce by embedding an innovative training program, tailored to each individual's needs and abilities, within a real business.

We believe people prepare best for work through work. Different from a Disability Employment Service (DES), our three-stage model supports trainees through:

- Jigsaw Academy: training in 20 core soft skills, alongside work experience. These skills include teamwork, punctuality and professional communication and are mapped against corporate and government entry-level roles.
- Jigsaw Digital: award wage employment working on client contracts for our digitisation and information management business, and
- Jigsaw Connect: support to secure and retain mainstream employment with a disability-aware, inclusive employer, when each individual is ready.



Since 2014, Jigsaw has supported more than 900 people with disability on their pathway to mainstream employment at award wage. Of those employed or transitioned into employment by Jigsaw, 91 per cent retain their position to this day, outperforming existing disability employment models.

We work collaboratively with the allied health community.

When a trainee joins our service, with their consent, we collaborate with their allied health practitioners (e.g. speech pathologist, OT, psychologist) to ensure we are working holistically to meet the person's goals and maximising their NDIS funding.

Do you have a client who would benefit from Jigsaw?

If you have a client who has the goal of mainstream employment and believe they would benefit from joining Jigsaw, please [click here](#).

Contact us.

☎:300 166 734 e: hello@jigsawaustralia.com.au w: jigsawaustralia.com.au



Sydney | Brisbane | Melbourne | Adelaide | Canberra | Online

Jigsaw is a social enterprise empowered by Fighting Chance. Fighting Chance builds social businesses to create a truly inclusive economy where people with disability have unbridled access to opportunity, dignity and prosperity.

Empowered by
**FIGHTING
CHANCE**

Jigsaw

**Shaped by
action.**



Introducing Jigsaw Academy.

People with disability should be fully included in the Australian workforce. Jigsaw's workplace-based training program is designed to break down the barriers that stop you from finding and keeping a mainstream job - by preparing you for work, through work.

Achieve your employment goals with Jigsaw.

At Jigsaw you will:

- ✔ Master transferable skills to help you in any workplace
- ✔ Put these into practice from day one with work experience in Jigsaw Digital
- ✔ Progress to paid, award-wage employment with Jigsaw
- ✔ Transition to mainstream employment

All at your own pace.



How does it work?

When you join Jigsaw, you'll work on 20 employment capabilities through group sessions, one-to-one coaching and online learning.

These 20 capabilities cover the core skills needed for government and corporate entry-level positions, such as communication, accountability, focus, problem-solving and more.

Your training and work experience will take place in Jigsaw's commercial document and data management business, Jigsaw Digital.

You'll then put your training into action with paid employment which delivers on contracts for Jigsaw's paying customers, and leave Jigsaw with employment experience on your resume.

When you're ready, we'll support you to access our network of employers and transition into a mainstream role.



Join Jigsaw using your NDIS funding today!

NDIS participants can use SLES, Finding and Keeping a Job, Capacity Building and Core Supports to attend Jigsaw. We can also provide free support to individuals to apply for the NDIS if required.

Contact us.

t: 1300 166 734

e: hello@jigsawaustralia.com.au

w: jigsawaustralia.com.au



Sydney | Brisbane | Melbourne | Adelaide | Online

Jigsaw is a social enterprise empowered by Fighting Chance. Fighting Chance builds social businesses to create a truly inclusive economy where people with disability have unbridled access to opportunity, dignity and prosperity.

Empowered by
**FIGHTING
CHANCE**



DISABILITY CAMPS COMING TO NSW!



Discover The Great Outdoors

Meet New Friends

Adventure For All

**ACA-People Outdoors:
NSW Camper E.O.I**

**ACA-People Outdoors:
Referral Form**



PEOPLE OUTDOORS - EXPERTS AT PROVIDING OUTDOOR EXPERIENCES FOR PEOPLE LIVING WITH DISABILITY

OUR PROGRAMS EXPLAINED

**Weekend Camps
(2 nights)**

Weekend Camps commence on a Friday evening and concludes on a Sunday afternoon - A Perfect Weekend Away. Enjoy a mix of adventure based activities, time outdoors as well as a chance to spend time with like minded people.

OUR SUPPORT RATIOS EXPLAINED

**1:3
Ratio**

- A camper who is independent in all areas of personal care including toileting, showering and brushing teeth (may just require prompting).
- Can eat independently, make drinks for themselves and has good communication and social skills.
- Understands rules of the road, social settings and can stay with the group on outings.

**1:2
Ratio**

- Require prompting or some assistance with showering, toileting and brushing teeth.
- May require prompting to pick appropriate clothes and get ready for the day.
- May need supervision with eating or using cutlery.
- Requires closer supervision in the community during outings.

**1:1
Ratio**

- A camper who uses manual or electric wheelchairs and need assistance.
- A camper that needs full assistance with personal care - showering, toileting, brushing teeth and dressing.
- Has special requirements during meal times and needs assistance to eat.
- Requires full assistance and constant supervision in the community.
- May have limited social skills.
- May display behaviours of concerns.

**PLEASE CONTACT US TODAY IF YOU REQUIRE A
QUOTE FOR YOUR NDIS PLAN**



DO YOU KNOW A YOUNG PERSON PLAYING A CARING ROLE FOR A FAMILY MEMBER WITH A DISABILITY, ILLNESS INCLUDING MENTAL ILLNESS, OR ADDICTION?

THEY DON'T HAVE TO BE THE PRIMARY CARER TO QUALIFY FOR THE RANGE OF SUPPORTS AVAILABLE TO YOUNG CARERS IN THE ACT.

YOUNG CARER INFO SESSION

WHERE: ONLINE

~~WEDNESDAY~~ THURSDAY 4TH, 2PM OR 6PM WHO:

ANY PARENTS, CARERS, OR FAMILY MEMBERS WHO ARE CONNECTED WITH A YOUNG PERSON PLAYING A CARING ROLE

JOIN OUR ONLINE INFO SESSIONS TO LEARN WHAT'S ON OFFER TO SUPPORT YOUNG CARERS, PRESENTED IN PARTNERSHIP WITH MALKARA SCHOOL AND THE WODEN SCHOOL BY STAFF FROM ANGLICARE'S CYCLOPS PROGRAM, CARERS ACT'S YOUNG CARERS PROGRAM, AND VINNIES' ST. NICKS PROGRAM.



To RSVP, please contact cyclops@anglicare.com.au and advise of which online session you will be attending



St Vincent de Paul Society
good works

ANGLICARE
NSW SOUTH | NSW WEST | ACT

CarersACT



Here To Help



Contact

Our staff are experienced disability support workers, hold WWVP, police checks and first aid certificates.



bookings@H2Hsupports.com.au



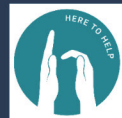
Sheryl 0423 492 021



244 Kambah Pool Road Kambah

Here To Help Animal Connections

*Build New Social Connections
Increase Confidence
Develop Skills
Have Fun*





At H2H Animal Connections, we prioritise respect, honesty, trust, and understanding in all our interactions with individuals. Our goal is to empower individuals, boost their confidence, and facilitate skill development.



→ **Tuesday Group 8-12 years**

From 3:30pm - 5:30pm
(During School Term)

→ **Thursday Group 13-18 years**

From 3:30pm - 5:30pm
(During School Term)

→ **Saturday Family Open Day**

From 9:00am - 11:00am
From \$25pp

→ **Special groups or private bookings available on request**

→ **School holiday programs will also be available**

For more information please contact
Sheryl on
0423 492 021
or bookings@h2hsupports.com.au

We provide a serene and beautiful environment where you can learn about animals. Our experienced staff will guide you through hands-on experiences, including brushing, walking, and feeding the animals.

NDIS registered and
wheelchair
accessible.



Our goal is to foster new social connections, boost confidence, develop skills, and above all, ensure a fun experience for all.



Here to Help – Post School Program

Here to Help supports young adults transitioning from school to the next stages of life as an NDIS post-school provider. We specialise in addressing the unique goals of participants and their families, departing from the structured school environment.

Our Kambah campus at Westwood Farm is the learning hub, offering programs that enhance social-emotional skills, functional independence, and vocational capabilities.

- Our experienced staff utilize communication tools such as PODD, ProloQuo2Go, and Auslan, enhancing communication through AAC systems, gestures, signs, and speech. Participants engage in co-planning and executing daily tasks including meal preparation, shopping, and interactive community engagements.
- Practical skills are honed through activities such as shopping, cooking, and personal care, utilizing both campus and community resources. The scenic campus promotes engagement with nature, animal care, and creative pursuits, fostering a supportive atmosphere for relationship building.
- Committed to advancing social and economic inclusion, Here to Help offers work skills programs and partnerships with local enterprises, paving pathways to employment and enriched community involvement.

Here's what our post-school program offers:

- Personal Growth
- Skill Development
- Tailored Experiences
- Animal connections

These experiences provide an opportunity to expand horizons and soothe your spirit. For more details on how to join this unique experience, please contact

admin@h2hsupports.com.au



Here to Help – Holiday Program

At our charming Wallaroo residence, nestled within the tranquil grounds, we've created a magical holiday experience tailored for school-aged children.

Here's a glimpse into our program, designed to spark joy and ignite curiosity:

Grow & Thrive: Our program is a launchpad for personal growth, helping kids step confidently into their next big adventure.

Skill Mastery: Through interactive play and teamwork, children sharpen their social-emotional abilities and practical life skills.

Creative Expressions: We believe every child is an artist. Our campus buzzes with activities including crafting, sensory play, painting, encouraging every young mind to create their masterpiece.

Animal Connections: Optional and always delightful, kids can bond with farm animals, learning care and compassion as they feed, groom, and play.

Our seasoned educators are adept in engaging young minds, using tools and techniques that make learning fun and effective. We're all about 'learning by doing' – whether it's whipping up a storm in the kitchen, navigating the exciting world of shopping, or crafting a community project.

At the heart of our holiday program is the belief that kids learn best when they're having fun. They'll embark on nature explorations, engage in sporting antics, and dive into cultural crafts, all while building lifelong friendships.

Enrol your child in our School Holiday Adventure Program and watch them flourish. For more details on how to join this unique experience, please contact admin@h2hsupports.com.au



Here to Help – Animal Connections

Welcome to Animal Connections, where we're dedicated to fostering meaningful connections between people and animals. At H2H Animal Connections our aim is to challenge both children and adults to step beyond their comfort zones, embrace new experiences, and cultivate bonds with our awesome animals.

Scientific research underscores the therapeutic benefits of animal interaction, offering a calming and comforting respite from the stresses of everyday life. With our expert staff guiding the way, you can experience the relaxation, education, and enjoyment with a variety of farm animals, including cows, horses, goats, alpacas, donkeys, and more.

Whether you're petting, grooming, feeding, or simply enjoying their company, our animal encounters provide a unique opportunity to learn new skills while fostering a deeper connection with the natural world.

At Animal Connections, we welcome visitors of all ages, accommodating various group sizes and offering tailored bookings and personalised one-on-one sessions.

This experience will be both exciting and calming, as our animals enjoy your company as much as you will enjoy theirs. For more information, reach out to bookings@h2hsupports.com.au.

